

DISHWASHER

Repair Parts List

MODEL NUMBER
MDC4650AWW

When requesting service or ordering parts, always provide the following information:

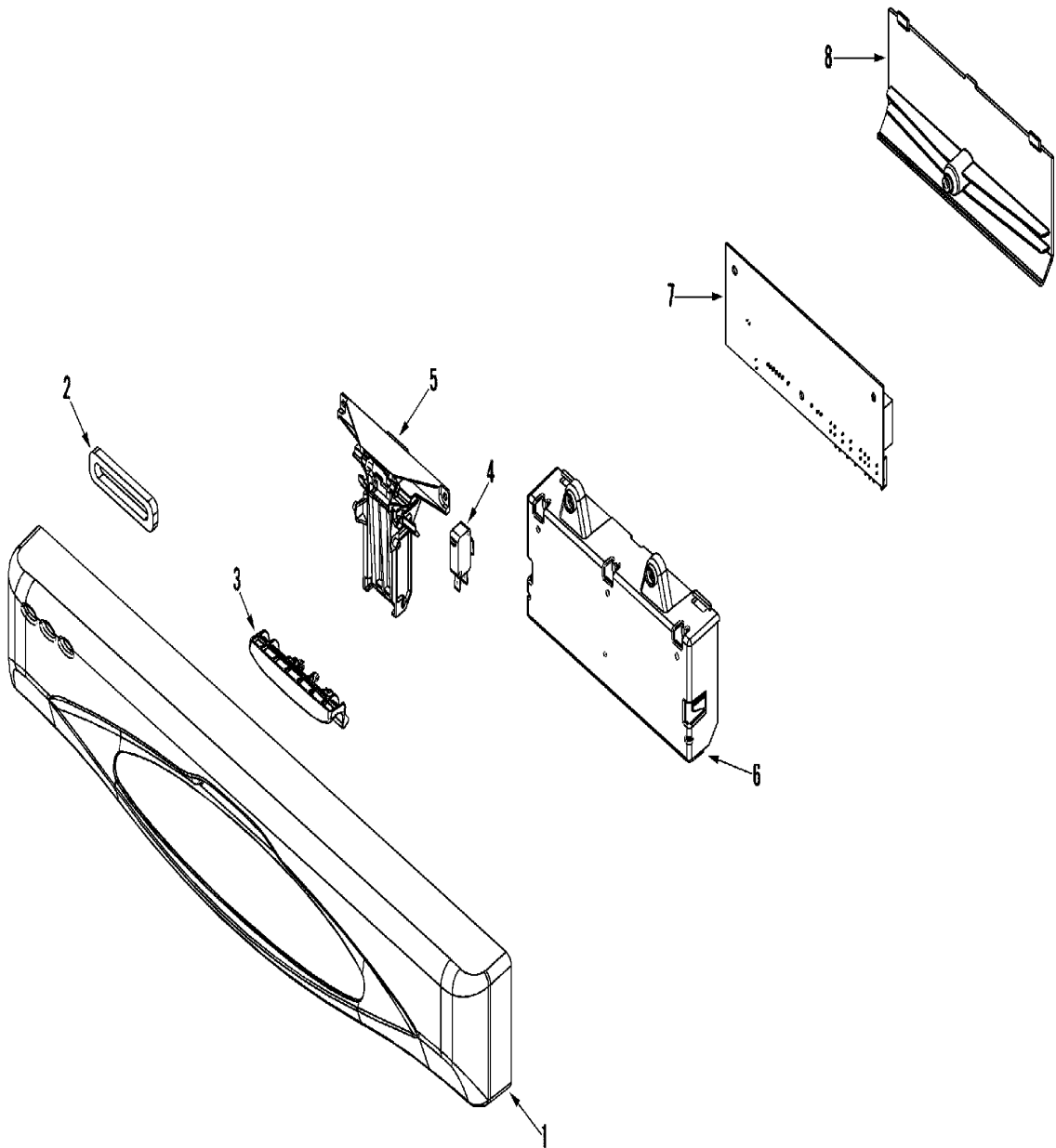
- Product Type
- Part Number
- Model Number
- Part Description

MAYTAG®

©2005 Maytag Services

Section: CONTROL PANEL

Model: MDC4650AWW



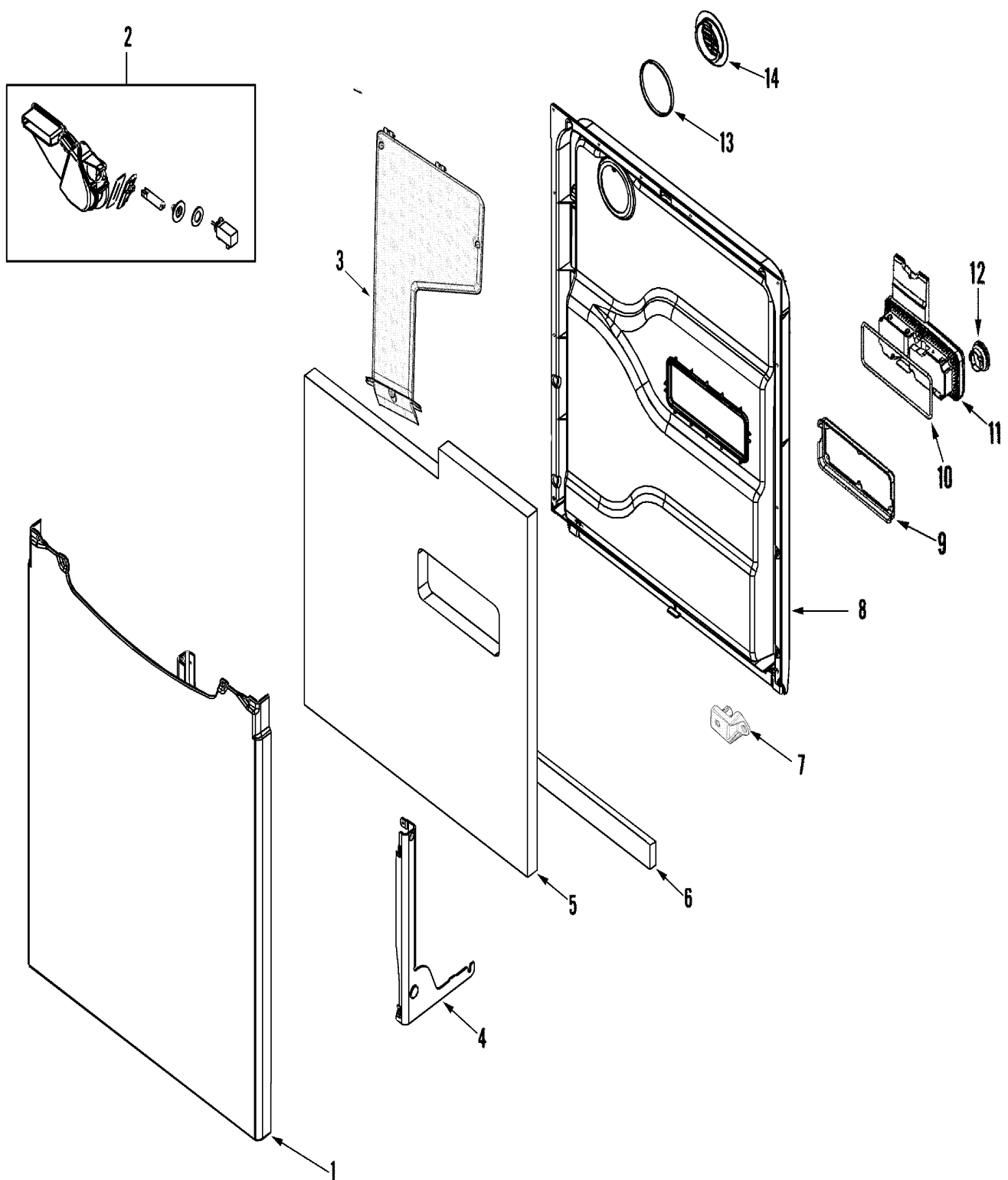
Section: CONTROL PANEL

No.	Part No.	Description	Series	Qty
1	99003224	PANEL, CONTROL (WHT)	10	1
-	912615	SCREW, #8X1/2 HEX WASHER HEAD Note: SCREW, PANEL	10	4
2	99003222	VENT SEAL, CONTROL PANEL	10	1
3	99002579	HANDLE, LATCH (WHT)	10	1
4	99002751	SWITCH, DOOR	10	2
5	99003347	LATCH ASSEMBLY	10	1
6	99002576	HOUSING, BOARD (BASE)	10	1
-	912615	SCREW, #8X1/2 HEX WASHER HEAD Note: SCREW, HOUSING	10	2
7	99003616	BOARD, CONTROL	33	1
7	99003360	BOARD, CONTROL	19	1
-	912615	SCREW, #8X1/2 HEX WASHER HEAD Note: SCREW, HOUSING	10	1
8	99002575	HOUSING, BOARD (TOP)	10	1
-	99003537	HARNES, WIRE	10	1

*Color Code (-)=Not Shown #=Series, Serial Prefix or Run No., N=Not Available

Section: DOOR

Model: MDC4650AWW



DW12-91

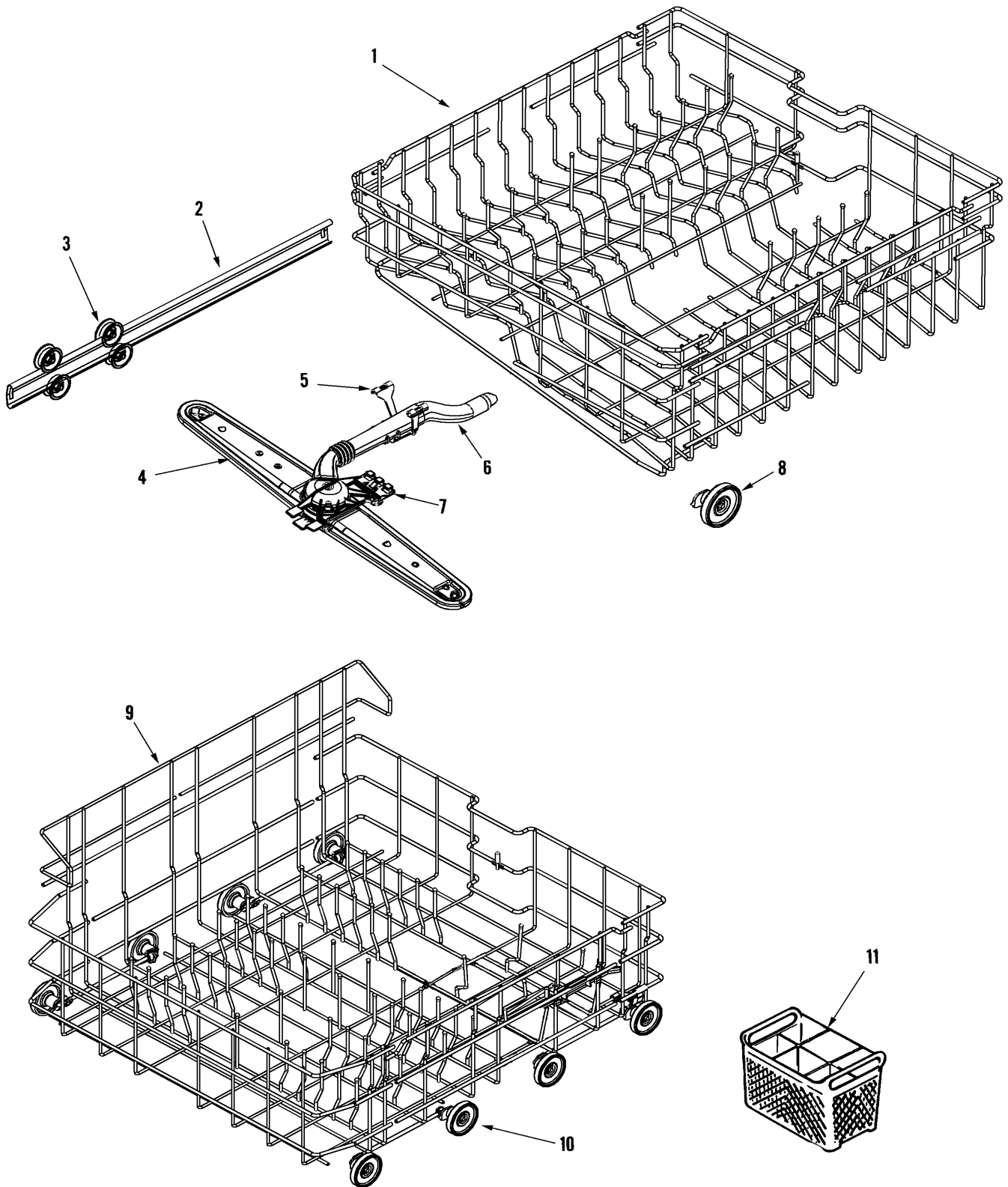
Section: DOOR

No.	Part No.	Description	Series	Qty
1	99002770	PANEL, DECO (W/DAMPER-WHT)	10	1
2	99002673	VENT HOUSING ASSEMBLY	10	1
3	99003540	DOOR LINER, SECONDARY	10	1
4	99002929	BRACKET, HINGE (LT)	10	1
4	99002930	BRACKET, HINGE (RT)	10	1
-	99001075	SCREW Note: SCREW, BRACKET	10	4
5	Y99002587	INSULATION, DOOR	10	1
6	903233	FOAM STRIP, INSULATION	10	1
7	99003541	BRACKET, SECONDARY DOOR LINER	10	2
-	Y912620	SCREW Note: SCREW, DOOR	10	11
8	99002970	DOOR, INNER (W/DAMPER)	10	1
9	99003316	BRACKET, DISPENSER MOUNTING	10	1
-	912615	SCREW, #8X1/2 HEX WASHER HEAD Note: SCREW, BRACKET	10	6
10	99002270	SEAL, BASE	10	1
11	99003317	RINSE AID/DETERGENT DISPENSER	10	1
12	99002614	KNOB, RINSE AID (W/O-RING)	10	1
13	99002186	SEAL, DOOR VENT	10	1
14	99002590	BEZEL, DOOR VENT	10	1

*Color Code (-)=Not Shown #=Series, Serial Prefix or Run No., N=Not Available

Section: TRACK & RACK ASSEMBLY

Model: MDC4650AWW



DW15-112

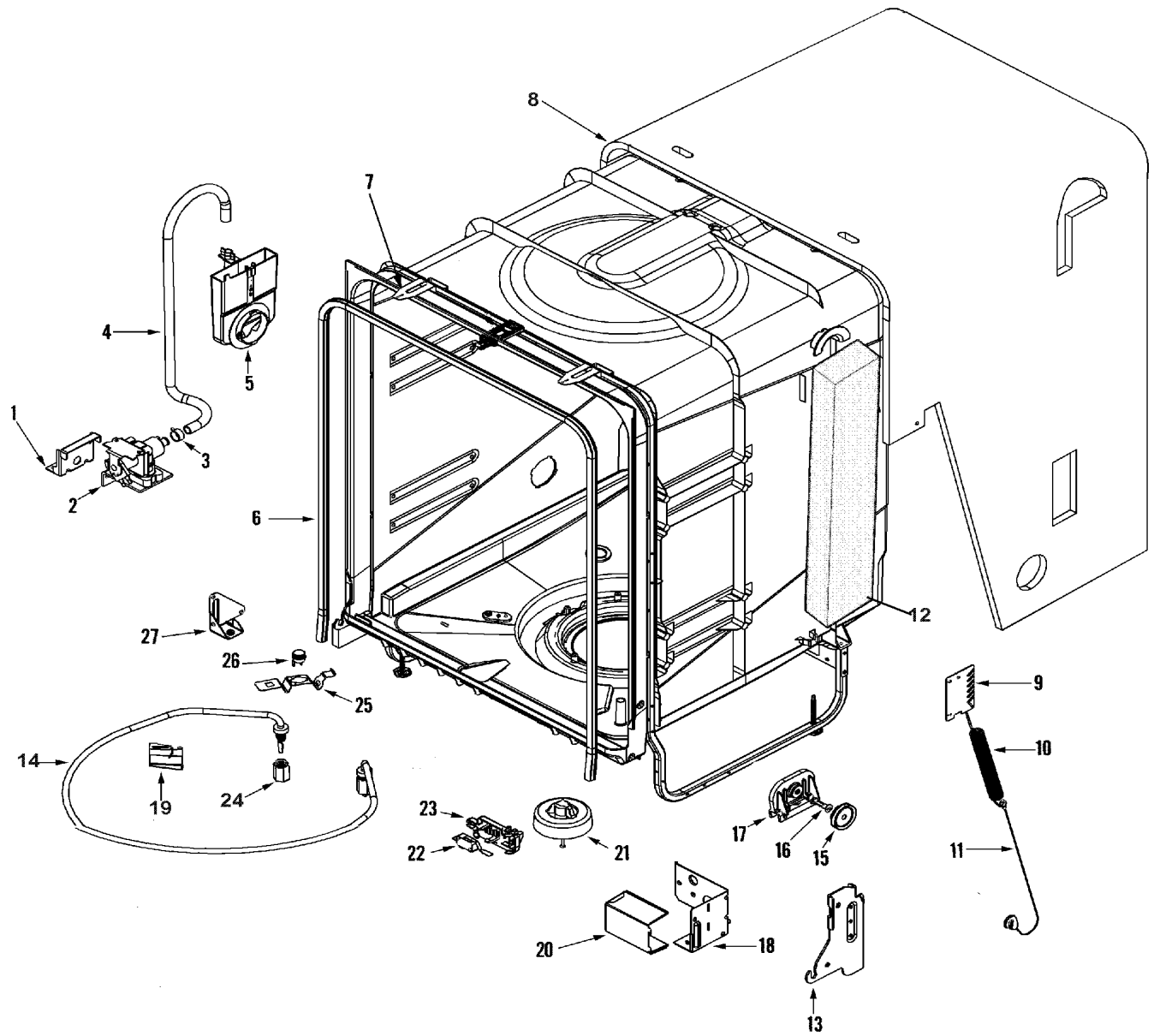
Section: TRACK & RACK ASSEMBLY

No.	Part No.	Description	Series	Qty
1	99003218	RACK ASSEMBLY (UPR)	10	1
-	99002017	CAP, RACK (LIGHT GRAY)	10	1
2	99002621	TRACK, RACK	10	2
-	99003476	STOP, RACK (BLUE)	10	4
3	99002947	TUB WHEEL ASSEMBLY (GRAY)	10	8
-	99002740	SCREW, TRUSS HEAD (10-18X.75) Note: SCREW, WASH ARM	10	1
4	99002624	ARM, WASH (UPR)	10	1
5	99002945	CLIP, UPR WASH MANIFOLD (BACK)	10	1
6	99002679	WASH MANIFOLD ASSY (UPR)	10	1
7	99002669	CLIP, UPR WASH MANIFOLD (FRT)	10	1
8	99002781	WHEEL ASSEMBLY (UPR)	10	4
9	99003219	RACK ASSEMBLY (LWR)	10	1
-	99002017	CAP, RACK (LIGHT GRAY)	10	1
10	99002780	WHEEL ASSEMBLY (LWR)	10	8
11	99002995	BASKET, SILVERWARE (GRAY)	10	1
-	99002619	HANDLE, SILVERWARE BASKET	10	1

*Color Code (-)=Not Shown #=Series, Serial Prefix or Run No., N=Not Available

Section: TUB

Model: MDC4650AWW



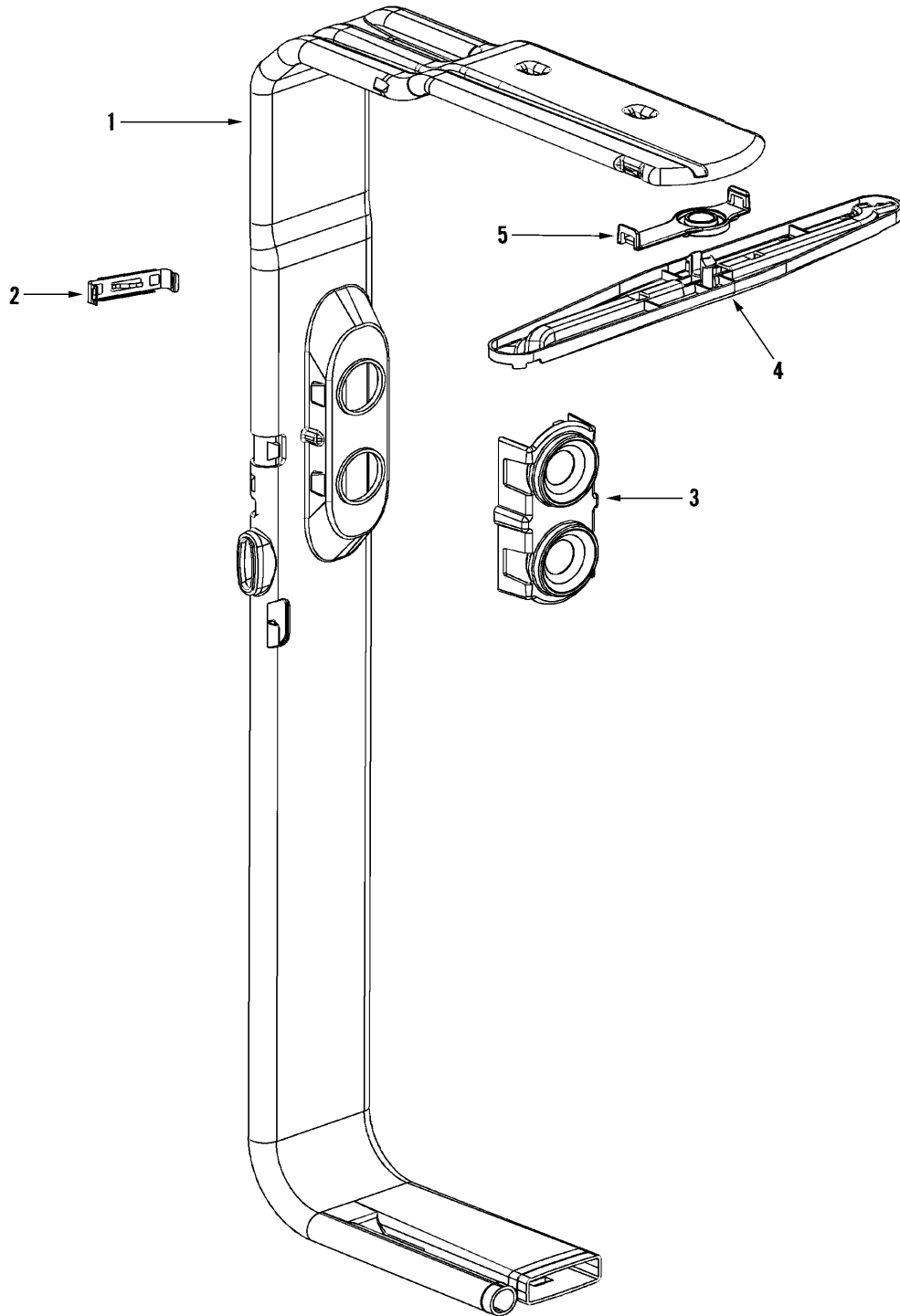
Section: TUB

No.	Part No.	Description	Series	Qty
-	99002553	SCREW-#8X7/16 HEX WASHER HEAD Note: SCREW, BRACKET	10	2
1	99003567	BRACKET, WATER VALVE	10	1
-	912365	SCREW Note: SCREW, VALVE	10	2
2	99003568	VALVE, WATER	10	2
3	911856	CLAMP, SPRING	10	1
4	99002852	HOSE, INJECTOR	10	1
-	99002646	SEAL, AIR/WATER INLET	10	1
5	99002645	INLET, AIR/WATER	10	1
6	99002588	SEAL, DOOR	10	1
7	99003563	BRACKET, CABINET MOUNT	10	2
-	911917	FASTENER, INSULATION Note: FASTENER. INSULATION	10	2
8	99002408	INSULATION, TUB (SHORT)	10	1
-	99002601	SCREW 10-32X.400 (T-20 HEAD) Note: SCREW, BRACKET	10	4
9	99002610	BRACKET, SPRING ADJUSTMENT	10	2
10	99002598	SPRING, DOOR	10	2
11	99003446	DOOR CABLE ASSEMBLY	10	2
12	99003564	BARRIER, EPS	10	1
-	99002601	SCREW 10-32X.400 (T-20 HEAD) Note: SCREW, SUPPORT	10	4
13	99002927	SUPPORT, HINGE (RT)	10	1
13	99002928	SUPPORT, HINGE (LT)	10	1
-	99002973	GASKET, HEATER	10	2
14	99002971	HEATER (W/GASKET)	10	1
15	99002608	ROLLER, CABLE BRACKET	10	2
16	99002609	SHOULDER BOLT, CABLE BRACKET	10	2
17	99002607	BRACKET, CABLE	10	2
-	99002601	SCREW 10-32X.400 (T-20 HEAD) Note: SCREW, BRACKET	10	2
18	99002637	BRACKET, JUNCTION BOX SUPPORT	10	1
19	99002626	BRACKET, HEATER SUPPORT	10	2
-	912365	SCREW Note: SCREW, COVER	10	1
20	99002638	COVER, JUNCTION BOX	10	1
21	99002630	FLOAT	10	1
22	99002631	SWITCH, FLOAT	10	1
23	99002943	PLATE, SWITCH MOUNTING	10	1
-	99002749	SCREW, STEEL HEX HD PLASITE Note: SCREW, PLATE	10	1
24	99002972	NUT, HEATER	10	2
25	99002634	CLIP, THERMOSTAT	10	1
26	99002633	THERMOSTAT, LIMITING	10	1
-	99002601	SCREW 10-32X.400 (T-20 HEAD) Note: SCREW, BRACKET	10	2
27	99002636	BRACKET, SUPPORT (LT)	10	1

*Color Code (-)=Not Shown #=Series, Serial Prefix or Run No., N=Not Available

Section: WATER DISTRIBUTION ASSEMBLY

Model: MDC4650AWW



DW14-72

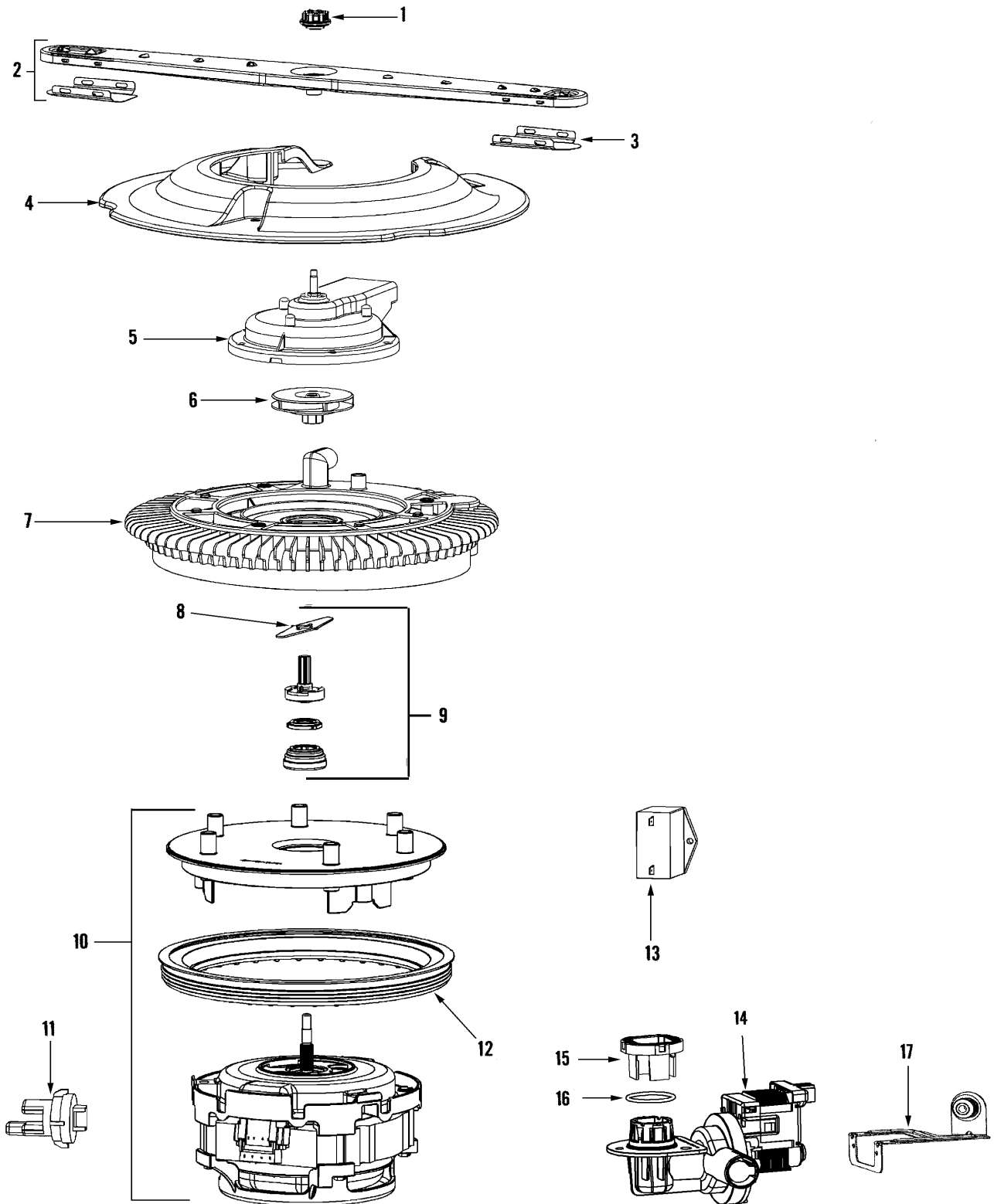
Section: WATER DISTRIBUTION ASSEMBLY

No.	Part No.	Description	Series	Qty
1	99002642	MANIFOLD, MAIN	10	1
2	99002643	BRACKET, MANIFOLD MOUNTING	10	2
3	99002674	STATION, DOCKING (W/FLAPPER)	10	1
4	99002676	WASH ARM, TOP (W/RETAINER)	10	1
5	99002753	RETAINER, TOP WASH ARM	10	1

*Color Code (-)=Not Shown #=Series, Serial Prefix or Run No., N=Not Available

Section: PUMP & MOTOR

Model: MDC4650AWW



DW14-82

Section: PUMP & MOTOR

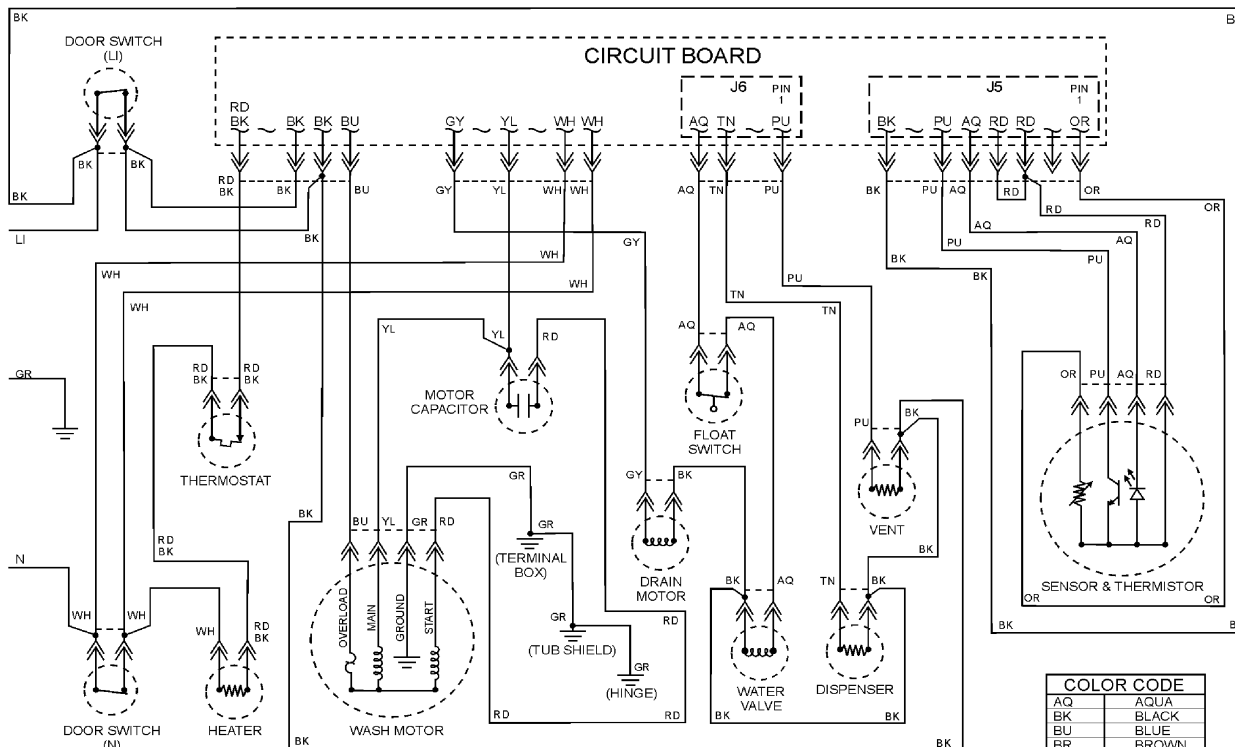
No.	Part No.	Description	Series	Qty
1	99002654	CAP, WASH ARM	10	1
2	99002678	WASH ARM, LOWER (W/SHIELDS)	10	1
3	99002653	SHIELD, RADIANT	10	2
4	99002979	GUARD, FILTER (GRAY)	10	1
-	99002666	SCREW Note: SCREW, GUARD	10	3
-	99002664	SCREW, DISCHARGE HOUSING	10	6
5	99002677	DISCHARGE HOUSING ASSY (UPR)	10	1
-	99002660	SCREW, IMPELLER	10	1
6	99002659	WASH IMPELLER ASSEMBLY	10	1
-	99002668	SCREW, STAINLESS PAN HEAD Note: SCREW, FILTER/FLOWPLATE	10	3
7	99002661	FILTER/FLOWPLATE ASSEMBLY	10	1
8	99003427	CHOPPER	10	1
9	99003341	SEAL KIT, METAL CHOPPER SLEEVE	10	1
10	99003430	WASH MOTOR ASSY SEAL NOT INCL	10	1
11	99002650	SENSOR, TURBIDITY	10	1
11	99003613	SENSOR, TURBIDITY	33	1
-	33002917	SCREW, #10-16 Note: SCREW, SENSOR	10	2
-	99002651	O-RING, TURBIDITY SENSOR	10	1
12	99002663	GASKET, PUMP	10	1
-	99003440	SHIELD, CAPACITOR	10	1
-	99002601	SCREW 10-32X.400 (T-20 HEAD) Note: SCREW, CAPACITOR	10	1
13	99002665	CAPACITOR, MOTOR	10	1
14	99002750	DRAIN PUMP ASSEMBLY	10	1
-	99002815	FLAPPER, DRAIN PUMP VALVE	10	1
15	99003058	FLAPPER, DRAIN FILTER	10	1
16	99002857	O-RING, DRAIN PUMP	10	1
-	99002657	SCREW, DRAIN PUMP MOUNTING	10	1
17	99002752	BRKT, DRAIN PUMP (W/GROMMET)	10	1

*Color Code (-)=Not Shown #=Series, Serial Prefix or Run No., N=Not Available

Section: WIRING INFORMATION

Model: MDC4650AWW

ELECTRICAL SCHEMATIC



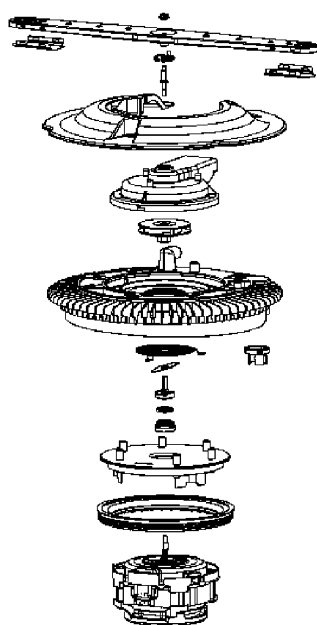
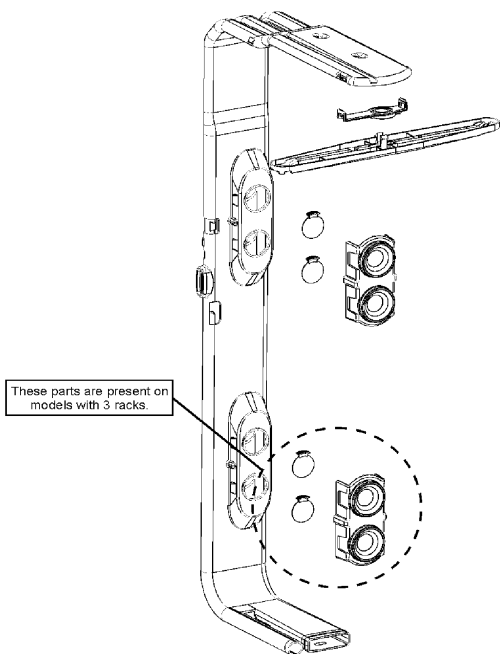
KEY

+	WIRES NOT CONNECTED
↓	WIRES CONNECTED

NOTE: SOME WIRES HAVE STRIPES. STRIPED WIRES ARE LABELED WITH THE SOLID COLOR FIRST AND THE STRIPE COLOR SECOND.
 EXAMPLE: A RED WIRE WITH A BLACK STRIPE WOULD BE LABELED RD BK

COLOR CODE

AQ	AQUA
BK	BLACK
BU	BLUE
BR	BROWN
GY	GRAY
GN	GREEN
OR	ORANGE
PK	PINK
PU	PURPLE
RD	RED
TN	TAN
WH	WHITE
YL	YELLOW



Component Information

- Wash Motor**
1/3 HP motor,
120V / 60hz, 3.2 amps, 3250 RPM
Main wattage, 285 watts
Start wattage, 1115 watts
- Water Valve**
120V / 60hz, 7 watts
1.13 ± .10 gpm at 20 - 120 psi
- Heating Element**
120V / 60hz, 650 watts ± 5% in air
830 watts ± 5% in cold water
- Limit Thermostat**
SPST 1/2" terminal switch
Close at 149° ± 7°F (65.0° ± 3.9°C)
Open at 164° ± 4°F (73.3° ± 2.3°C)
- Thermistor**
Resistance and tolerance:
10kΩ ± 3% at 77°F (25°C) and
2.4kΩ ± 6.5% at 140°F (60°C)
- Wax Motors**
Vent - 120V continuous duty 1/4"
actuation stroke within 90 seconds
Detergent & Rinse Aid - 120V
incremental duty with 1/4"
actuation stroke within 90 seconds
- Capacitor**
300V / 50 - 60hz
185°F(85°C), 15µf + 10% / -5%
- Drain Motor**
45 watts

99003526

Section: CABINET & FAUCET COUPLER ASSY.

No.	Part No.	Description	Series	Qty
-	912365	SCREW Note: SCREW, BRACKET	10	4
1	99003532	BRACKET, COUNTERWEIGHT	10	1
2	99003571	FRAME, BASE (FRT) Note: FRAME, BASE (FRT)	10	1
3	Y912838	FRAME, REAR Note: FRAME, BASE (REAR)	10	1
-	912365	SCREW Note: SCREW, FRAME	10	6
4 N	911020	CABLE STRAP Note: STRAP, HOSE	10	1
5	Y912851	RECEPTACLE, HOSE	10	1
6	99003572	TRIM, CABINET	10	2
-	912365	SCREW Note: SCREW, TRIM	10	4
7	99003573	TOP, WOOD ----S Note: TOP, WOOD (INCL. 20)	10	1
-	912625	SCREW Note: SCREW, TOP	10	2
8	99003574	COUNTERWEIGHT	10	1
9	99003562	BOTTOM, FOIL Note: BOTTOM, CABINET (FIBERBOARD)	10	1
10	900159	AERATOR & PLUG ASSY Note: AERATOR & ADAPTER ASSEMBLY	10	1
11	903297	TWIN WHEEL CASTER Note: CASTER, TWIN WHEEL (W/SLEEVE)	10	4
12	99002852	HOSE, INJECTOR Note: HOSE, WATER INJECTOR	10	1
13	99001525	PANEL, TOE (WHT) Note: PANEL, TOE (WHT)	10	1
14	99003570	CABINET, COMPLETE (WHT)	10	1
-	912624	SCREW Note: (CABINET TO REAR FRAME)	10	2
-	912366	SCREW --+*** Note: SCREW, CABINET	10	2
-	912621	SCREW Note: (CABINET TO CABINET SUPPORT)	10	2
-	Y013783	GASKET, INLET HOSE Note: GASKET, COUPLER ASSEMBLY	10	1
15	99001868	COUPLER & HOSE ASSY.	10	1
-	911445	WIRE CONNECTOR Note: CONNECTOR, WIRE	10	2
-	911532	STRAIN RELIEF GROMMET Note: GROMMET (CORD TO TERMINAL)	10	1
16 N	901115	POWER CORD W/CONNECTING NUT Note: CORD, POWER	10	1
- N	912878	GROMMET----NA Note: GROMMET (CORD TO TUB)	10	1
17	99003575	SCREW Note: SCREW, WOOD TOP	10	4
18	910854	PALNUT FOR COUPLER RETAINER Note: PALNUT, HOSE RECEPTACLE	10	5
19	912366	SCREW --+*** Note: SCREW, FRAME (FRT)	10	2
20	911917	FASTENER, INSULATION Note: FASTENER, CABINET (BTM)	10	4
21	99002553	SCREW-#8X7/16 HEX WASHER HEAD Note: SCREW, TOE PANEL (WHT)	10	2
22	Y912840	STRAP, HOLD DOWN Note: STRAP, COUNTERWEIGHT	10	1
23	910209	WASHER FOR FAUCET ADAPTER Note: WASHER, FAUCET ADAPTER	10	1
24	910208	FAUCET ADAPTER Note: ADAPTER, FAUCET	10	1
25	910223	WASHER, AERATOR Note: AERATOR, WASHER	10	1
26	900084	AERATOR	10	1
27	99002860	SUPPORT, FRONT (W/SEALS)(WHT)	10	1

*Color Code (-)=Not Shown #=Series, Serial Prefix or Run No., N=Not Available

Section: SUPPLEMENTAL INFORMATION

No.	Part No.	Description	Series	Qty
-	Y6920109	MANUAL, USE & CARE	10	1
-	16026897	TECH SHT, DISHWASHER	10	1
-	16026945	SERVICE MANUAL, DISHWASHER	10	1
-	Y6920162	GUIDE, ENERGY	10	1
-	99002854	MISC. PARTS PACKAGE	10	1

*Color Code (-)=Not Shown #=Series, Serial Prefix or Run No., N=Not Available

